

Questions/Concerns

Community Waste Disposal
Customer Service Representatives
are ready to assist you with the
following:

Questions
Complaints
Accolades
Cart Repair
Damages/Spills

Customer Service Hours

Weekdays 8:00 a.m. - 5:00 p.m.
Saturdays 8:00 a.m. - 2:00 p.m.

972.392.9300
Option 2

customerservice@cwd.to
www.cwd.to

Holiday Service Schedule

CWD observes three holidays a year:
New Year's Day, Thanksgiving Day
and Christmas Day.

See website for specific Holiday Collection Schedule.



CommunityWasteDisposal.com
Since 1984

2010 California Crossing Road Dallas TX 75220-2310
phone 972.392.9300 fax 972.392.9301
www.CWD.to



105 Cockrell Hill Ovilla TX 75154
phone 972.617.7262
www.cityofovilla.org

Bulk & Brush

Bulk and brush will be collected every week, on your trash collection day. Please refer to the map on the reverse side of this brochure to determine your pickup route. You are limited to four cubic yards of bulk and loose brush per collection.

Limbs should not be greater than six inches in diameter, should weigh no more than 50 pounds, nor be longer than four feet. All limbs should be placed with trunks parallel to the street without obstructing the sidewalk.

Place all bulk and brush items next to your trash receptacles no later than 7:00 a.m. on your designated service day.

1 cubic yard is equivalent to 1 washing machine



Bulky Waste - Acceptable

Toys and Yard Tools Tagged as "Bulk Item"

Furniture

Bundled Carpet in 4-foot Lengths

Fence Panels No Larger than 4'x6'

Washing Machines, Dryers, Water Heaters and
Kitchen Appliances

Refrigerators/Freezers
(Must be tagged certifying removal of refrigerants)

Additional Trash Bags



Bulky Waste - Prohibited

Household Hazardous Waste

Tires, Batteries, and Propane Tanks

Loose Construction and Remodeling Debris
Loose Household Debris
(Debris must be placed in a box or
other disposable container no larger than
2'x2'x4' and weighing no more than 50 pounds.)

X-treme Green Event



Community Waste Disposal will host one X-treme Green Event per year in the City of Ovilla. An X-treme Green Event is a one-stop place to dispose of household hazardous waste, automotive tires, used electronics, and household metal goods. Confidential document shredding is available on-site.

Visit www.CWD.to for additional information.



Ovilla Residential Services



Trash & Recycling Bulk & Brush X-treme Green Event



CommunityWasteDisposal.com
Since 1984

Place all trash and recyclable items out no later than 7:00 a.m. for pickup between 7:00 a.m. and 7:00 p.m. on your collection day. Please ensure the trash containers and the recycle cart are three feet away from obstacles such as mailboxes, cars, fences, gas meters, and drainage ditches.

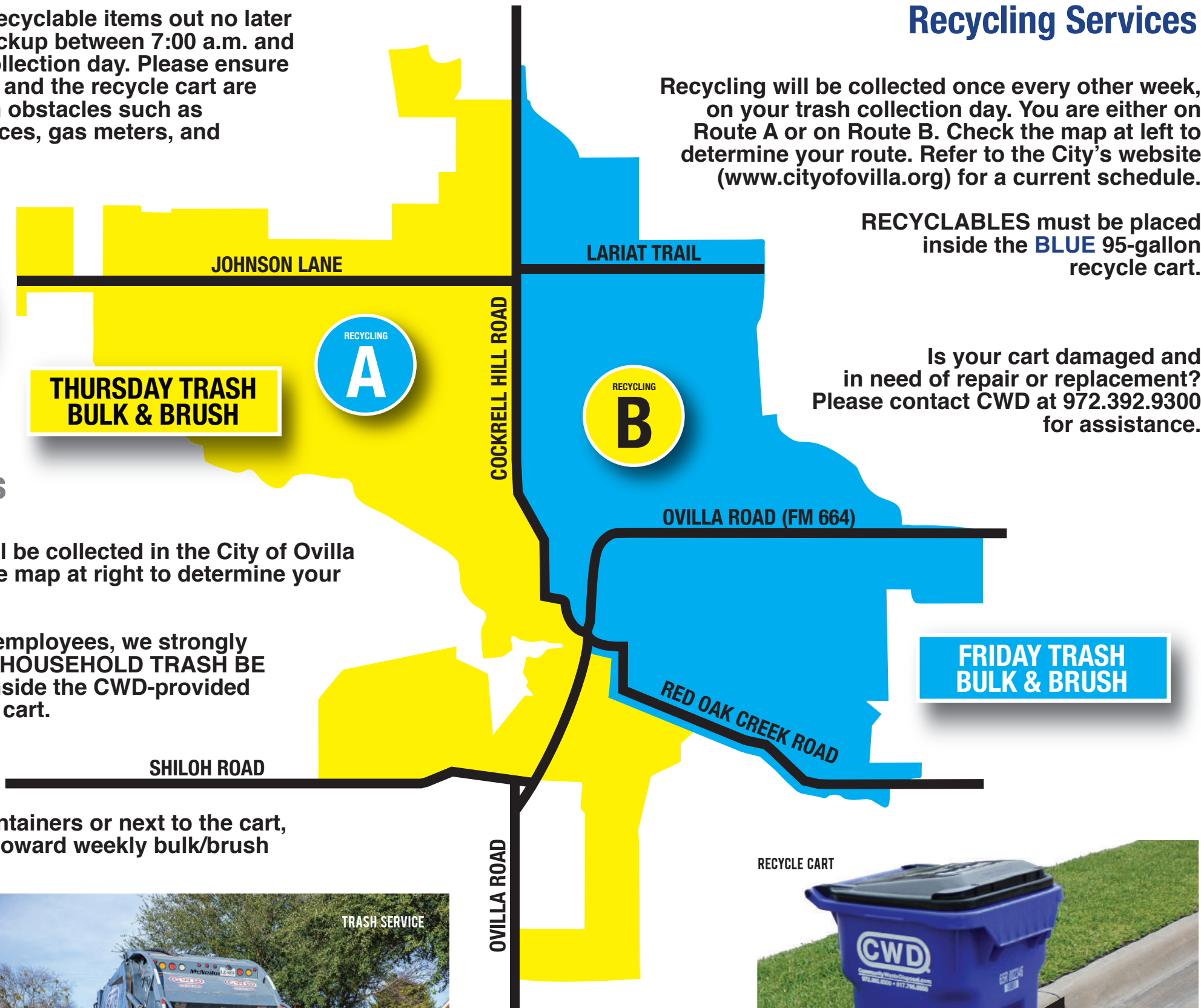
MORE INFORMATION CAN BE FOUND AT WWW.CITYOFVILLA.ORG

Trash Services

Residential trash will be collected in the City of Ovilla once a week. See the map at right to determine your collection day.

To help protect our employees, we strongly encourage that **ALL HOUSEHOLD TRASH BE PLACED IN BAGS** inside the CWD-provided grey 95-gallon trash cart.

Additional trash bags can be placed in customer-owned containers or next to the cart, but will be counted toward weekly bulk/brush collection limits.



Recycling Services

Recycling will be collected once every other week, on your trash collection day. You are either on Route A or on Route B. Check the map at left to determine your route. Refer to the City's website (www.cityofvilla.org) for a current schedule.

RECYCLABLES must be placed inside the **BLUE** 95-gallon recycle cart.

Is your cart damaged and in need of repair or replacement? Please contact CWD at 972.392.9300 for assistance.



Plastic Containers #1-5 & 7
Aluminum, Steel & Tin Containers
Wax-Coated Paper Drink Containers
Corrugated Cardboard & Boxboard
Mixed Paper
Newspaper
Glass Bottles & Containers

Please Recycle!

DO NOT RECYCLE!

Paper, Plastic & Styrofoam Serving Items
Paper Towels, Facial & Toilet Tissue
Shredded Paper
Grass Clippings
Food & Wet Waste
Plastic Bags & Packaging